

# GQ22



# GQ25

# GQ28



# GQ30

## Part-number Description

Code of series	Code name	The Front shape	Contact structure	Operation mode	Lamp type	◆ Operation position of selector and key-lock type	Lamp color	Lamp voltage	Crust material
LAS1 - ★ ☆ - □ ■ ◇ / ◆ ● / ▲ / ○	BGQ22 BGQ25 BGQ28 AGQ30 BGQ30	<b>H</b> High Round <b>PF</b> Super flat head + flat actuator <b>No letter means flat round</b>	11 1NO1NC 22 2NO2NC 33 3NO3NC <b>See the detailed description which are available</b>	Z Latching Y Key-lock <b>No letter means momentary</b>	D Dot E Ring C Ring+symbol illuminated	2 Two position 3 Three position <b>● Operation type of selector and key-lock type</b> 1 Maintain 2 Half return 3 Return	R Red G Green Y Yellow O Orange B Blue W White	AC/DC 6V AC/DC 12V AC/DC 24V AC/DC 110V AC/DC 220V <b>Other voltage can be made to order</b>	<b>S</b> Stainless steel <b>A</b> Aluminium alloy(black)

**Note:** 1. Pls read the catalogue carefully, and choose the right part-number according to the sign.  
2. LAS1-BGQ22 can be written GQ22 for short, LAS1-BGQ25 can be written GQ25, LAS1-BGQ28 can be written GQ28, LAS1-BGQ28 can be written GQ30, some 30mm product can not be written short. Please refer to the detailed description.

**LAS1-AGQ Switch Rating**

<b>Rated Insulation Voltage Ui</b>		250V			
<b>Thermal Current Ith</b>		5A			
<b>Rated voltage</b>		12V	24V	110V	220V
<b>Rated Operation Current</b>	AC Resistive load	—	—	1A	0.5A
	50/60Hz Inductive load	—	—	0.7A	0.5A
	DC Resistive load	1A	1A	0.2A	—
	DC Inductive load	0.7A	0.7A	0.1A	—
<b>Contact material</b>		Silver Alloy			

Minimum load: 3V AC/DC,5mA (Reference)  
Application scope depends on operating environment and load type

**LAS1-BGQ Switch Rating**

<b>Rated Insulation Voltage Ui</b>		250V			
<b>Thermal Current Ith</b>		5A			
<b>Rated voltage</b>		12V	24V	110V	220V
<b>Rated Operation Current</b>	AC Resistive load	—	—	5A	3A
	50/60Hz Inductive load	—	—	3A	2A
	DC Resistive load	5A	5A	1A	0.5A
	DC Inductive load	2A	2A	0.2A	0.1A
<b>Contact material</b>		Silver Alloy			

Minimum load: 3V AC/DC,5mA (Reference)  
Application scope depends on operating environment and load type

**Lamp Rating**

**Lamp type** LED Lamp (AC/DC)  
**LED color** R G Y O B W  
**Life span** 40000 hours (Reference)  
**Rated Voltage** AC/DC6V, AC/DC12V, AC/DC110V, AC/DC24V, AC/DC36V, AC/DC220V  
**Rated Voltage** About 15mA; About 2mA  
**Dropping life** Inner resistance  
**Lamp Circuit Diagram** Using AC/DC LED lamp, the terminals have no difference of anode and cathode: Using inner resistance, do not need outer resistance

**Note:** DC LED and other voltage can be made to order.

**Specifications**

<b>Operating Temperature</b>	-25°C ~ +55°C(no freezing) Maintain good ventilation round the switch
<b>Operating Humidity</b>	45~85%RH(no condensation)
<b>Contact Resistance</b>	≤50mΩ
<b>Insulation Resistance</b>	≥1000MΩ
<b>Dielectric strength</b>	2000V, AC50Hz, 5 seconds
<b>Vibration Resistance</b>	50Hz,amplitude 1.2mmP-P
<b>Shock Resistance</b>	≥10g
<b>Solder Heat Resistance</b>	320°C(no more than 2 seconds)

**Declaration of conformity**

<b>corresponding standard</b>	<b>Certification</b>	<b>Certificate Authority/Certification Number</b>
EN61058-1:2002+A2:2008	CE	VOV/VT11018806
EN60947-1:2004	CE	CTS/CTS070706-01006-E

**Terminal Description**

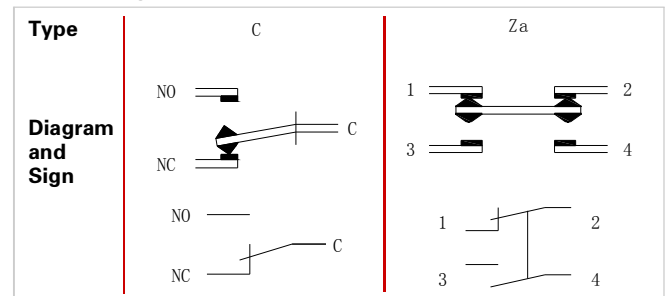
**LAS1-AGQ**

Two sets at most. C1, NO1, NC1 and C2, NO2, NC2 are one set respectively. C is common used, NO is normal opened, NC is normal closed; +, - are lamp terminals, the standard LED have no difference of anode and cathode; Lamp and switch are relatively independent and can use switch or peripheral circuit to control the lamp state.

**LAS1-BGQ (GQ22)** **LAS1-BGQ (GQ25,28,30)** **LAS1-BGQ30-33Y**

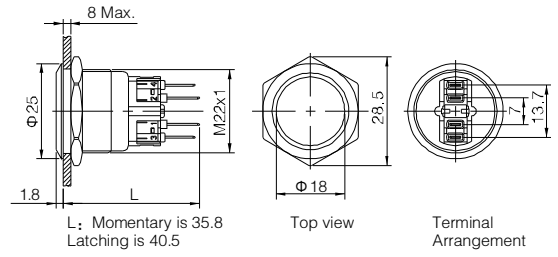
1,2,3,4 are one set; 1,2 are normal closed(NC);3,4 are normal opened(NO). The standard LED terminals have no difference of anode and cathode. The lamp and switch are relatively independent and can use switch or peripheral circuit to control the lamp state.

**Switching Operation**

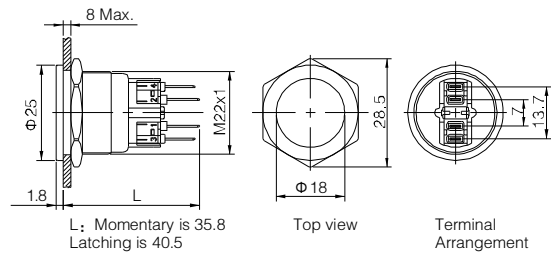




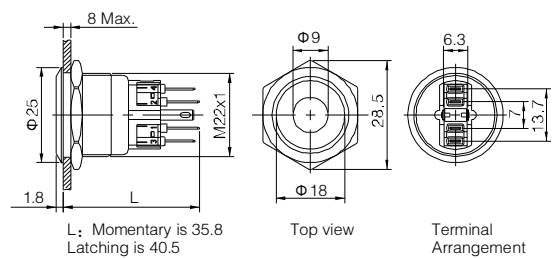
- ⊙ Φ22mm Diameter
- ⊙ Switch Rating:Ith:5A, Ui:250V
- ⊙ Contact Configuration:1NO1NC
- ⊙ Operation Type(■): Momentary /Latching(Z)
- ⊙ The Crust Material(◎): Stainless steel(S)Anodized(A)
- ⊙ IP Degree: IP65(IP67 made to order),IK10



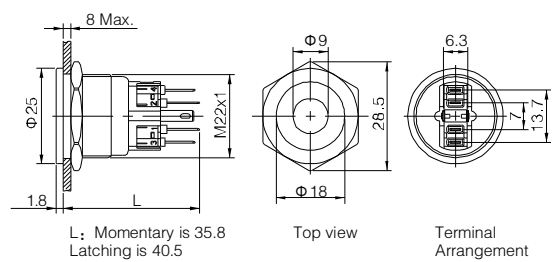
- ⊙ Φ22mm Diameter
- ⊙ Switch Rating:Ith:5A, Ui:250V
- ⊙ Contact Configuration:1NO1NC
- ⊙ Operation Type(■): Momentary /Latching(Z)
- ⊙ The Crust Material(◎): Stainless steel(S)
- ⊙ IP Degree: IP65(IP67 made to order),IK10



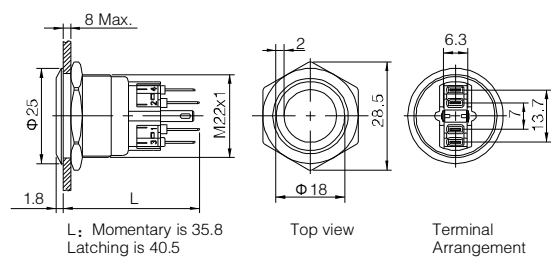
- ⊙ Φ22mm Diameter
- ⊙ Switch Rating:Ith:5A, Ui:250V
- ⊙ Contact Configuration:1NO1NC
- ⊙ Operation Type(■): Momentary /Latching(Z)
- ⊙ LED color(Δ): R G Y O B W
- ⊙ LED voltage(▲): 6V/12V/24V/110V/220V
- ⊙ The Crust Material(◎): Stainless steel(S)Anodized(A)
- ⊙ IP Degree: IP65(IP67 made to order),IK10



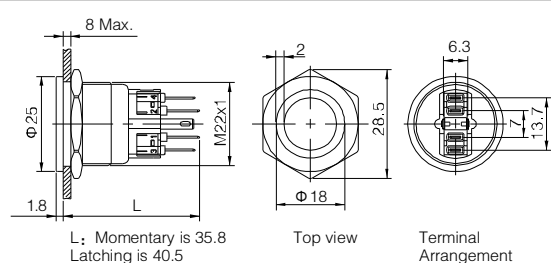
- ⊙ Φ22mm Diameter
- ⊙ Switch Rating:Ith:5A,Ui:250V
- ⊙ Contact Configuration:1NO1NC
- ⊙ Operation Type(■): Momentary /Latching(Z)
- ⊙ LED color(Δ): R G Y O B W
- ⊙ LED voltage(▲): 6V/12V/24V/110V/220V
- ⊙ The Crust Material(◎): Stainless steel(S)
- ⊙ IP Degree: IP65(IP67 made to order),IK10



- ⊙ Φ22mm Diameter
- ⊙ Switch Rating:Ith:5A, Ui:250V
- ⊙ Contact Configuration:1NO1NC
- ⊙ Operation Type(■): Momentary /Latching(Z)
- ⊙ LED color(Δ): R G Y O B W
- ⊙ LED voltage(▲): 6V/12V/24V/110V/220V
- ⊙ The Crust Material(◎): Stainless steel(S)Anodized(A)
- ⊙ IP Degree: IP65(IP67 made to order),IK10

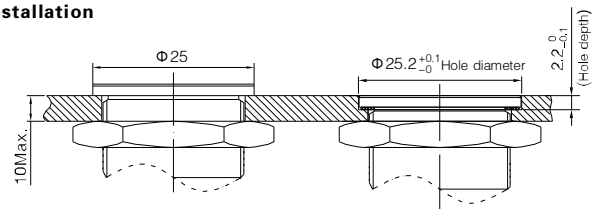


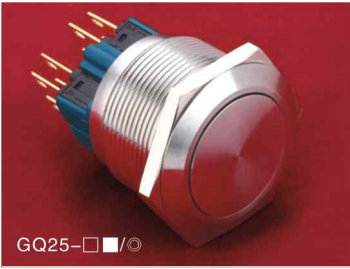
- ⊙ Φ22mm Diameter
- ⊙ Switch Rating:Ith:5A, Ui:250V
- ⊙ Contact Configuration:1NO1NC
- ⊙ Operation Type(■): Momentary /Latching(Z)
- ⊙ LED color(Δ): R G Y O B W
- ⊙ LED voltage(▲): 6V/12V/24V/110V/220V
- ⊙ The Crust Material(◎): Stainless steel(S)
- ⊙ IP Degree: IP65(IP67 made to order),IK10



<b>GQ22-11■/◎</b>		<b>GQ22PF-11■/◎</b>	
<b>GQ22-11■D/Δ/▲/◎</b>		<b>GQ22PF-11■D/Δ/▲/◎</b>	
<b>GQ22-11■E/Δ/▲/◎</b>		<b>GQ22PF-11■E/Δ/▲/◎</b>	
<b>Switching</b>	Za(double-break fast-motion changeover contact)	<b>Material</b>	<b>Button</b> Stainless steel/Anodized
<b>Panel Thickness</b>	1 ~ 8mm		<b>Body</b> Stainless steel/Anodized
<b>Mechanical Life</b>	1,000,000 cycles		<b>Base</b> PA
<b>Electrical Life</b>	50,000 cycles	<b>Operation Pressure</b>	About4N
<b>Terminal Type</b>	Pin Terminal(2.8×0.5mm)	<b>Operation Travel</b>	About2.8mm
<b>Torque</b>	1.0Nm	<b>RoHS</b>	Made to order

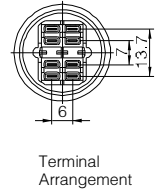
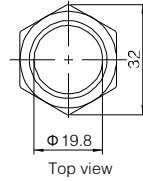
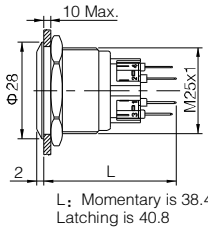
**GQ22Flush Flat Anti-vandal pushbutton Installation**





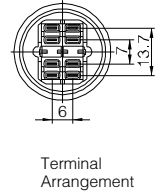
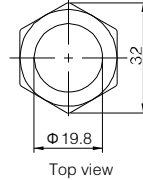
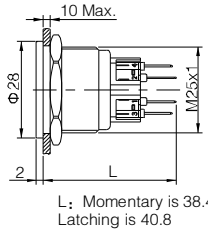
GQ25-□■/○

- ⊙ Φ25mm Diameter
- ⊙ Switch Rating: Ith:5A, Ui:250V
- ⊙ Contact Configuration(□): 1NO1NC(11)/2NO2NC(22)
- ⊙ Operation Type(■): Momentary / Latching(Z)
- ⊙ Crust Material(⊙): Stainless steel(S)/Anodized(A)
- ⊙ IP Degree: IP65(IP67made to order) ,IK10



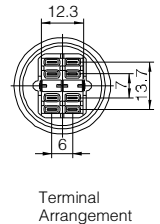
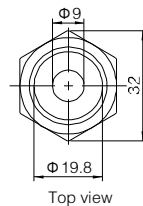
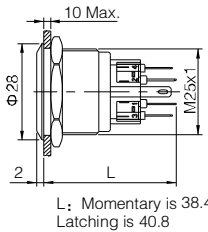
GQ25PF-□■/○

- ⊙ Φ25mm Diameter
- ⊙ Switch Rating: Ith:5A, Ui:250V
- ⊙ Contact Configuration(□): 1NO1NC(11)/2NO2NC(22)
- ⊙ Operation Type(■): Momentary / Latching(Z)
- ⊙ Crust Material(⊙): Stainless steel(S)
- ⊙ IP Degree: IP65(IP67made to order) ,IK10



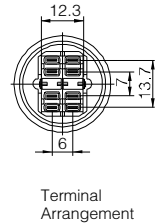
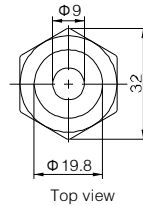
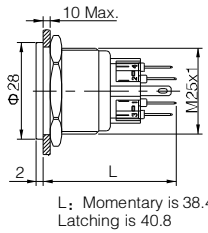
GQ25-□■D/Δ/▲/○

- ⊙ Φ25mm Diameter
- ⊙ Switch Rating: Ith:5A, Ui:250V
- ⊙ Contact Configuration(□): 1NO1NC(11)/2NO2NC(22)
- ⊙ Operation Type(■): Momentary / Latching(Z)
- ⊙ LED Color(Δ): R G Y O B W
- ⊙ LED Voltage(▲): 6V/12V/24V/110V/220V
- ⊙ Crust Material(⊙): Stainless steel(S)/Anodized(A)
- ⊙ IP Degree: IP65(IP67made to order) ,IK10



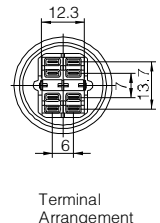
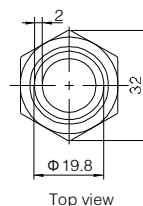
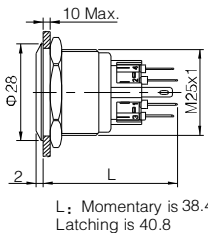
GQ25PF-□■D/Δ/▲/○

- ⊙ Φ25mm Diameter
- ⊙ Switch Rating: Ith:5A, Ui:250V
- ⊙ Contact Configuration(□): 1NO1NC(11)/2NO2NC(22)
- ⊙ Operation Type(■): Momentary / Latching(Z)
- ⊙ LED Color(Δ): R G Y O B W
- ⊙ LED Voltage(▲): 6V/12V/24V/110V/220V
- ⊙ Crust Material(⊙): Stainless steel(S)
- ⊙ IP Degree: IP65(IP67made to order) ,IK10



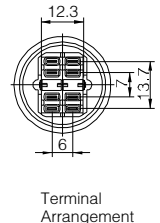
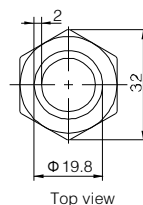
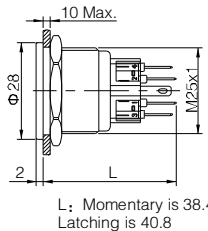
GQ25-□■E/Δ/▲/○

- ⊙ Φ25mm Diameter
- ⊙ Switch Rating: Ith:5A, Ui:250V
- ⊙ Contact Configuration(□): 1NO1NC(11)/2NO2NC(22)
- ⊙ Operation Type(■): Momentary / Latching(Z)
- ⊙ LED Color(Δ): R G Y O B W
- ⊙ LED Voltage(▲): 6V/12V/24V/110V/220V
- ⊙ Crust Material(⊙): Stainless steel(S)/Anodized(A)
- ⊙ IP Degree: IP65(IP67made to order) ,IK10



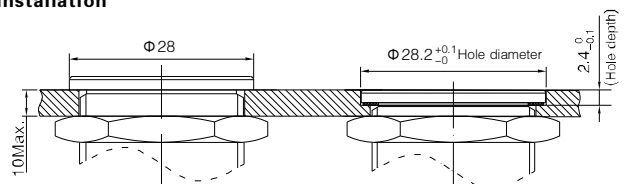
GQ25PF-□■E/Δ/▲/○

- ⊙ Φ25mm Diameter
- ⊙ Switch Rating: Ith:5A, Ui:250V
- ⊙ Contact Configuration(□): 1NO1NC(11)/2NO2NC(22)
- ⊙ Operation Type(■): Momentary / Latching(Z)
- ⊙ LED Color(Δ): R G Y O B W
- ⊙ LED Voltage(▲): 6V/12V/24V/110V/220V
- ⊙ Crust Material(⊙): Stainless steel(S)
- ⊙ IP Degree: IP65(IP67made to order) ,IK10



GQ25-□■/○		GQ25PF-□■/○		
GQ25-□■D/Δ/▲/○		GQ25PF-□■D/Δ/▲/○		
GQ25-□■E/Δ/▲/○		GQ25PF-□■E/Δ/▲/○		
<b>Switching</b>	Za(double-break fast-motion changeover contact)	<b>Material</b>	<b>Button</b>	Stainless steel/ Anodized
<b>Panel Thickness</b>	1 ~ 8mm		<b>Body</b>	Stainless steel/ Anodized
<b>Mechanical Life</b>	1,000,000 cycles		<b>Base</b>	PA
<b>Electrical Life</b>	50,000 cycles	<b>Operation Pressure</b>	5.5-7N	
<b>Terminal Type</b>	Pin Terminal(2.8 × 0.5mm)	<b>Operation Travel</b>		
<b>Torque</b>	1.2Nm	<b>RoHS</b>	Made to order	

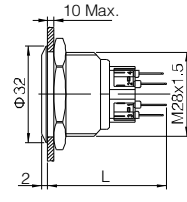
**GQ25Flush Flat Anti-vandal pushbutton Installation**



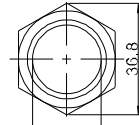


New

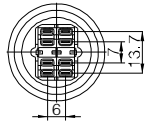
- ⊙ Φ28mm Diameter
- ⊙ Switch Rating: Ith:5A, Ui:250V
- ⊙ Contact Configuration(□): 1NO1NC(11)/2NO2NC(22)
- ⊙ Operation Type(■): Momentary / Latching(Z)
- ⊙ Crust Material(⊙): Stainless steel(S)
- ⊙ IP Degree: IP65(IP67made to order) ,IK10



L: Momentary is 39.4  
Latching is 41.8



Top view

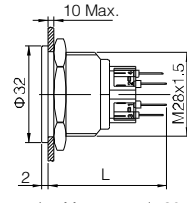


Terminal Arrangement

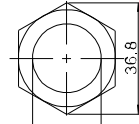


New

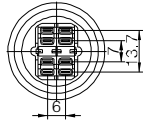
- ⊙ Φ28mm Diameter
- ⊙ Switch Rating: Ith:5A, Ui:250V
- ⊙ Contact Configuration(□): 1NO1NC(11)/2NO2NC(22)
- ⊙ Operation Type(■): Momentary / Latching(Z)
- ⊙ Crust Material(⊙): Stainless steel(S)
- ⊙ IP Degree: IP65(IP67made to order) ,IK10



L: Momentary is 39.4  
Latching is 41.8



Top view

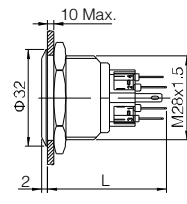


Terminal Arrangement

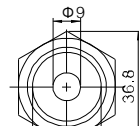


New

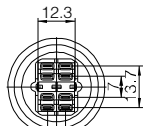
- ⊙ Φ28mm Diameter
- ⊙ Switch Rating: Ith:5A, Ui:250V
- ⊙ Contact Configuration(□): 1NO1NC(11)/2NO2NC(22)
- ⊙ Operation Type(■): Momentary / Latching(Z)
- ⊙ LED Color(Δ): R G Y O B W
- ⊙ LED Voltage(▲): 6V/12V/24V/110V/220V
- ⊙ Crust Material(⊙): Stainless steel(S)
- ⊙ IP Degree: IP65(IP67made to order) ,IK10



L: Momentary is 39.4  
Latching is 41.8



Top view

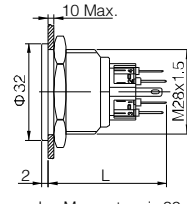


Terminal Arrangement

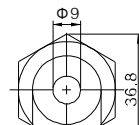


New

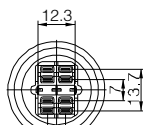
- ⊙ Φ28mm Diameter
- ⊙ Switch Rating: Ith:5A, Ui:250V
- ⊙ Contact Configuration(□): 1NO1NC(11)/2NO2NC(22)
- ⊙ Operation Type(■): Momentary / Latching(Z)
- ⊙ LED Color(Δ): R G Y O B W
- ⊙ LED Voltage(▲): 6V/12V/24V/110V/220V
- ⊙ Crust Material(⊙): Stainless steel(S)
- ⊙ IP Degree: IP65(IP67made to order) ,IK10



L: Momentary is 39.4  
Latching is 41.8



Top view

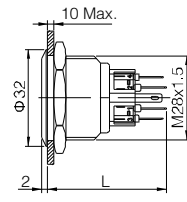


Terminal Arrangement

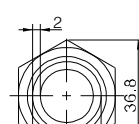


New

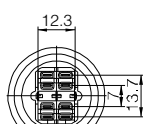
- ⊙ Φ28mm Diameter
- ⊙ Switch Rating: Ith:5A, Ui:250V
- ⊙ Contact Configuration(□): 1NO1NC(11)/2NO2NC(22)
- ⊙ Operation Type(■): Momentary / Latching(Z)
- ⊙ LED Color(Δ): R G Y O B W
- ⊙ LED Voltage(▲): 6V/12V/24V/110V/220V
- ⊙ Crust Material(⊙): Stainless steel(S)
- ⊙ IP Degree: IP65(IP67made to order) ,IK10



L: Momentary is 38.4  
Latching is 40.8



Top view

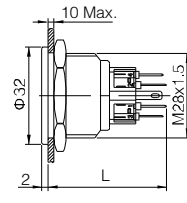


Terminal Arrangement

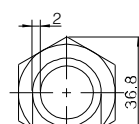


New

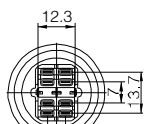
- ⊙ Φ28mm Diameter
- ⊙ Switch Rating: Ith:5A, Ui:250V
- ⊙ Contact Configuration(□): 1NO1NC(11)/2NO2NC(22)
- ⊙ Operation Type(■): Momentary / Latching(Z)
- ⊙ LED Color(Δ): R G Y O B W
- ⊙ LED Voltage(▲): 6V/12V/24V/110V/220V
- ⊙ Crust Material(⊙): Stainless steel(S)
- ⊙ IP Degree: IP65(IP67made to order) ,IK10



L: Momentary is 38.4  
Latching is 40.8



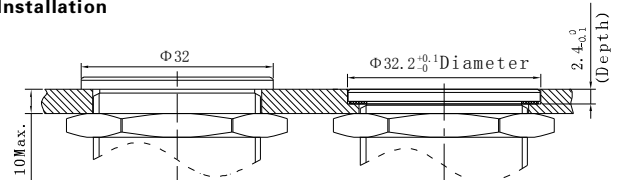
Top view



Terminal Arrangement

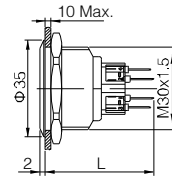
GQ28-□■/○		GQ28PF-□■/○		
GQ28-□■D/Δ/▲/○		GQ28PF-□■D/Δ/▲/○		
GQ28-□■E/Δ/▲/○		GQ28PF-□■E/Δ/▲/○		
Switching	Za(double-break fast-motion changeover contact)	Material	Button	Stainless steel
Panel Thickness	1 ~ 8mm		Body	Stainless steel
Mechanical Life	1,000,000 cycles		Base	PA
Electrical Life	50,000 cycles	Operation Pressure	5.5-7N	
Terminal Type	Pin Terminal(2.8 × 0.5mm)	Operation Travel	About 2.8mm	
Torque	1.4Nm	RoHS		Made to order

**GQ28 Flush Flat Anti-vandal Pushbutton Installation**

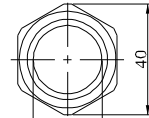




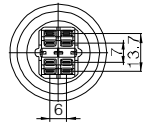
- ⊙ Φ30mm Diameter
- ⊙ Switch Rating: Ith:5A, Ui:250V
- ⊙ Contact Configuration(□): 1NO1NC(11)/2NO2NC(22)
- ⊙ Operation Type(■): Momentary / Latching(Z)
- ⊙ Crust Material(⊙): Stainless steel(S)
- ⊙ IP Degree: IP65(IP67made to order) ,IK10



L: Momentary is 39.4  
Latching is 41.8



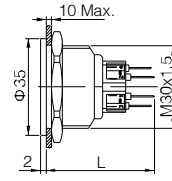
Top View



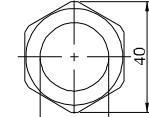
Terminal Arrangement



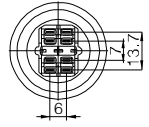
- ⊙ Φ30mm Diameter
- ⊙ Switch Rating: Ith:5A, Ui:250V
- ⊙ Contact Configuration(□): 1NO1NC(11)/2NO2NC(22)
- ⊙ Operation Type(■): Momentary / Latching(Z)
- ⊙ Crust Material(⊙): Stainless steel(S)
- ⊙ IP Degree: IP65(IP67made to order) ,IK10



L: Momentary is 39.4  
Latching is 41.8



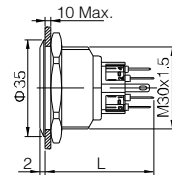
Top View



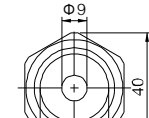
Terminal Arrangement



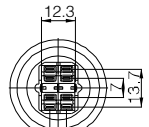
- ⊙ Φ30mm Diameter
- ⊙ Switch Rating: Ith:5A, Ui:250V
- ⊙ Contact Configuration(□): 1NO1NC(11)/2NO2NC(22)
- ⊙ Operation Type(■): Momentary / Latching(Z)
- ⊙ LED Color(Δ): R G Y O B W
- ⊙ LED Voltage(▲): 6V/12V/24V/110V/220V
- ⊙ Crust Material(⊙): Stainless steel(S)
- ⊙ IP Degree: IP65(IP67made to order) ,IK10



L: Momentary is 39.4  
Latching is 41.8



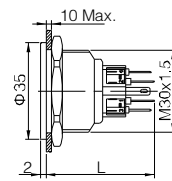
Top View



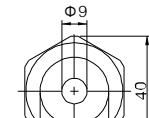
Terminal Arrangement



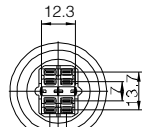
- ⊙ Φ30mm Diameter
- ⊙ Switch Rating: Ith:5A, Ui:250V
- ⊙ Contact Configuration(□): 1NO1NC(11)/2NO2NC(22)
- ⊙ Operation Type(■): Momentary / Latching(Z)
- ⊙ LED Color(Δ): R G Y O B W
- ⊙ LED Voltage(▲): 6V/12V/24V/110V/220V
- ⊙ Crust Material(⊙): Stainless steel(S)
- ⊙ IP Degree: IP65(IP67made to order) ,IK10



L: Momentary is 39.4  
Latching is 41.8



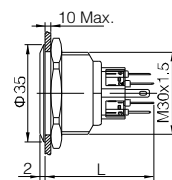
Top View



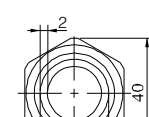
Terminal Arrangement



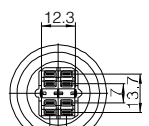
- ⊙ Φ30mm Diameter
- ⊙ Switch Rating: Ith:5A, Ui:250V
- ⊙ Contact Configuration(□): 1NO1NC(11)/2NO2NC(22)
- ⊙ Operation Type(■): Momentary / Latching(Z)
- ⊙ LED Color(Δ): R G Y O B W
- ⊙ LED Voltage(▲): 6V/12V/24V/110V/220V
- ⊙ Crust Material(⊙): Stainless steel(S)
- ⊙ IP Degree: IP65(IP67made to order) ,IK10



L: Momentary is 38.4  
Latching is 40.8



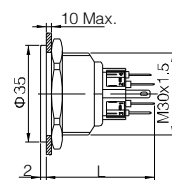
Top View



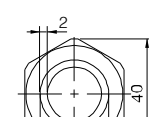
Terminal Arrangement



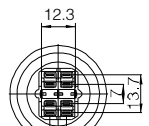
- ⊙ Φ30mm Diameter
- ⊙ Switch Rating: Ith:5A, Ui:250V
- ⊙ Contact Configuration(□): 1NO1NC(11)/2NO2NC(22)
- ⊙ Operation Type(■): Momentary / Latching(Z)
- ⊙ LED Color(Δ): R G Y O B W
- ⊙ LED Voltage(▲): 6V/12V/24V/110V/220V
- ⊙ Crust Material(⊙): Stainless steel(S)
- ⊙ IP Degree: IP65(IP67made to order) ,IK10



L: Momentary is 38.4  
Latching is 40.8



Top View



Terminal Arrangement

GQ30F-□■/○		GQ30PF-□■/○		
GQ30F-□■D/Δ/▲/○		GQ30PF-□■D/Δ/▲/○		
GQ30F-□■E/Δ/▲/○		GQ30PF-□■E/Δ/▲/○		
Switching	Za(double-break fast-motion changeover contact)	Material	Button	Stainless steel
Panel Thickness	1 ~ 8mm		Body	Stainless steel
Mechanical Life	1,000,000 cycles		Base	PA
Electrical Life	50,000 cycles		Operation Pressure	5.5-7N
Terminal Type	Pin Terminal(2.8 × 0.5mm)		Operation Travel	About 2.8mm
Torque	1.6Nm	RoHS		Made to order

**Gq30 Flush Flat Anti-vandal Pushbutton Installation**

