

GQ19

Metal Push Button



Part-number Description

| Code of series | Product structure | The Front shape | Contact structure | Lamp type | Connet type | Lamp color and colorized button | Lamp voltage | Crust material |
|----------------|--|--|---|-----------------|---|--|--|---|
| GQ19 | S Short type No letter means standard type | B Domed F Flat Round H High Round PF Super Flat Head+ Flat Button PH Super Flat Head+ High Flat Button | 10 1NO 01 1NC 1NC can be made to order for some products No letter means signal lamp | D Dot E Ring | J Pin terminal No letter means screw terminal | R Red G Green Y Yellow O Orange B Blue W White N Black | AC/DC 6V AC/DC 12V AC/DC 24V AC/DC 36V Note: Other voltage can be made to order | N Nickel-plated Brass S Stainless steel A Aluminium Cr Chrome-plated (made to order) |

Note: Pls read the catalogue carefully, and choose the right part-number according to the sign.

Specifications

| | |
|-------------------------------|--|
| Operating Temperature | -25°C~+55°C(no freezing) keep the air flowing around illuminated pushbutton |
| Operating Humidity | 45~85%RH(no condensation) |
| Contact Resistance | ≤50mΩ |
| Insulation Resistance | ≥1000MΩ |
| Dielectric Strength | 2000V,A C50Hz,5 seconds |
| Vibration Resistance | 50Hz,Amplitude 1.2mm |
| Shock Resistance | > 10g |
| Solder Heat Resistance | 320°C(or 30W soldering iron) no more than 2 seconds) |

Standard and Certification

| | | |
|------------------------|---------------------------|---|
| Standard | Certification Mark | Certificate Authority/Certification Number |
| EN61058-1:2002+A2:2008 | CE | VOV/VT11018807 |
| EN60947-1:2004 | CE | CTS/CTS070706-01006-E |

Switching Operation

| | | |
|----------------|---|---|
| Type | X | Y |
| Sign | | |
| Diagram | | |

Note: Using two terminals, double-break and slow-motion contact

Y type NC switch can be made to order for individual product, pls check the product description.

Lamp Ratings

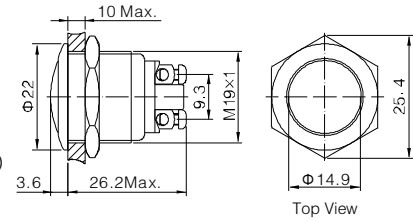
| | |
|-----------------------------|--|
| Lamp Type | LED lamp(AC/DC) |
| Led Color | R G Y O B W |
| Life | 40000 hours (Reference) |
| Rated Voltage | AC/DC6V,AC/DC12V,AC/DC24V,AC/DC36V |
| Rated Current | About 15mA |
| DroppingWay | External resistance |
| Lamp Circuit Diagram | Using AC/DCLed lamp, the terminals have no difference of anode and cathode |



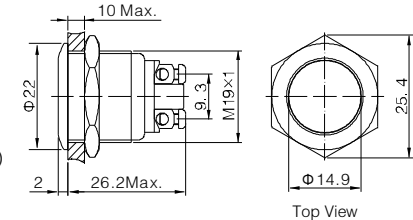
Note: DC LED and other voltage can be made to order.



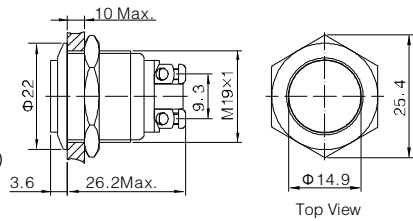
- ⊙ Φ 19mm Diameter
- ⊙ Switch Rating: 2A/36VDC
- ⊙ Contact Configuration: 1NO
- ⊙ Operation Type: Momentary
- ⊙ The Front Shape: Domed
- ⊙ The Crust Material: (⊙): Stainless steel(S)/
Nickel plated Brass(N)/Black anodized aluminium alloy(A)
- ⊙ IP Degree: IP65,IK09



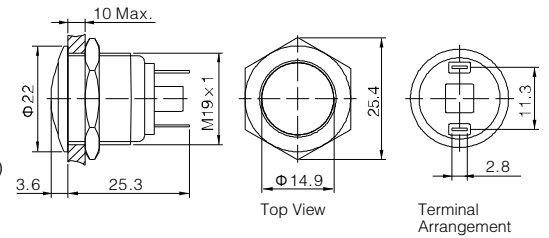
- ⊙ Φ 19mm Diameter
- ⊙ Switch Rating: 2A/36VDC
- ⊙ Contact Configuration: 1NO
- ⊙ Operation Type: Momentary
- ⊙ The Front Shape: Flat round
- ⊙ The Crust Material: (⊙): Stainless steel(S)/
Nickel plated Brass(N)/Black anodized aluminium alloy(A)
- ⊙ IP Degree: IP65,IK09



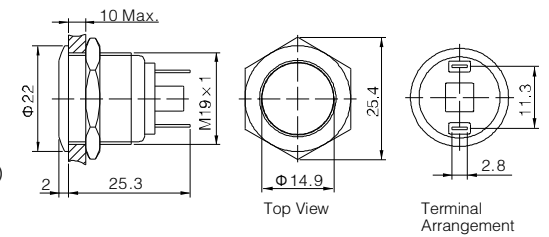
- ⊙ Φ 19mm Diameter
- ⊙ Switch Rating: 2A/36VDC
- ⊙ Contact Configuration: 1NO
- ⊙ Operation Type: Momentary
- ⊙ The Front Shape: High round
- ⊙ The Crust Material: (⊙): Stainless steel(S)/
Nickel plated Brass(N)/Black anodized aluminium alloy(A)
- ⊙ IP Degree: IP65,IK09



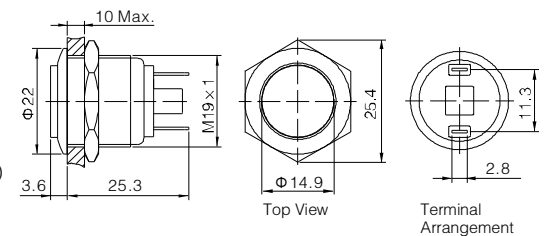
- ⊙ Φ 19mm Diameter
- ⊙ Switch Rating: 2A/36VDC
- ⊙ Contact Configuration: 1NO
- ⊙ Operation Type: Momentary
- ⊙ The Front Shape: Domed
- ⊙ The Crust Material: (⊙): Stainless steel(S)/
Nickel plated Brass(N)/Black anodized aluminium alloy(A)
- ⊙ IP Degree: IP65,IK09



- ⊙ Φ 19mm Diameter
- ⊙ Switch Rating: 2A/36VDC
- ⊙ Contact Configuration: 1NO
- ⊙ Operation Type: Momentary
- ⊙ The Front Shape: Flat round
- ⊙ The Crust Material: (⊙): Stainless steel(S)/
Nickel plated Brass(N)/Black anodized aluminium alloy(A)
- ⊙ IP Degree: IP65,IK09



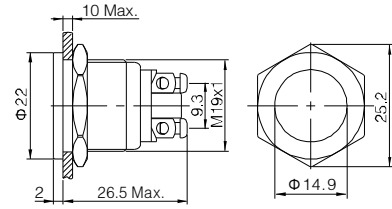
- ⊙ Φ 19mm Diameter
- ⊙ Switch Rating: 2A/36VDC
- ⊙ Contact Configuration: 1NO
- ⊙ Operation Type: Momentary
- ⊙ The Front Shape: High round
- ⊙ The Crust Material: (⊙): Stainless steel(S)/
Nickel plated Brass(N)/Black anodized aluminium alloy(A)
- ⊙ IP Degree: IP65,IK09



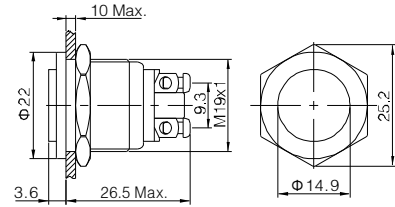
| GQ19B-10/⊙ GQ19F-10/⊙ GQ19H-10/⊙ | | Material | Button | Stainless steel | GQ19B-10/J/⊙ GQ19F-10/J/⊙ GQ19H-10/J/⊙ | | Material | Button | Stainless steel |
|--|----------------|------------------|-------------------------------------|-------------------------------------|--|---------------------------|------------------|--------------------|-------------------------------------|
| Terminal Type | Screw Terminal | | Body | Stainless steel/Nickel-plated brass | Terminal Type | Pin terminal(2.8 × 0.5mm) | | Body | Stainless steel/Nickel-plated brass |
| | Switching | | x(double-break slow-motion contact) | Base | | PBT | | Operation Pressure | About 4N |
| Operation Pressure | About 4N | Operation Travel | About 2.5mm | Panel Thickness | 1 ~ 6mm | Operation Pressure | About 4N | Operation Travel | About 2.5mm |
| Torque | 0.8Nm | Mechanical Life | 1,000,000 cycles | Torque | 0.8Nm | Mechanical Life | 1,000,000 cycles | Electrical Life | 200,000 cycles |
| Electrical Life | 200,000 cycles | RoHS | Made to order | Electrical Life | 200,000 cycles | RoHS | Made to order | | |



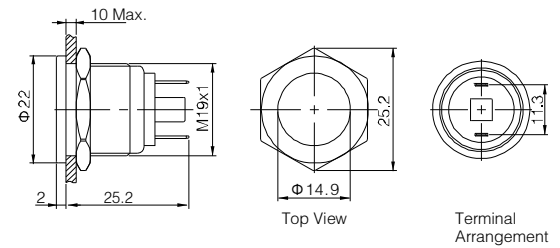
- ⊙ Φ 19mm Diameter
- ⊙ Switch Rating: 2A/36VDC
- ⊙ Contact Configuration: 1NO
- ⊙ Operation Type: Momentary
- ⊙ The Front Shape: Flat round
- ⊙ The Crust Material: (⊙): Stainless steel(S)/
Nickel plated Brass(N)
- ⊙ IP Degree: IP65,IK09



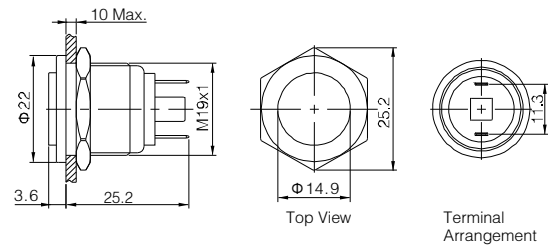
- ⊙ Φ 19mm Diameter
- ⊙ Switch Rating: 2A/36VDC
- ⊙ Contact Configuration: 1NO
- ⊙ Operation Type: Momentary
- ⊙ The Front Shape: High round
- ⊙ The Crust Material: (⊙): Stainless steel(S)/
Nickel plated Brass(N)
- ⊙ IP Degree: IP65,IK09



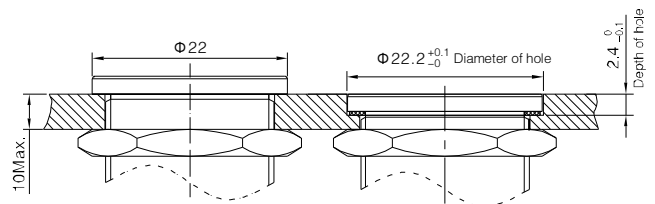
- ⊙ Φ 19mm Diameter
- ⊙ Switch Rating: 2A/36VDC
- ⊙ Contact Configuration: 1NO
- ⊙ Operation Type: Momentary
- ⊙ The Front Shape: Flat round
- ⊙ The Crust Material: (⊙): Stainless steel(S)/
Nickel plated Brass(N)
- ⊙ IP Degree: IP65,IK09



- ⊙ Φ 19mm Diameter
- ⊙ Switch Rating: 2A/36VDC
- ⊙ Contact Configuration: 1NO
- ⊙ Operation Type: Momentary
- ⊙ The Front Shape: High round
- ⊙ The Crust Material: (⊙): Stainless steel(S)/
Nickel plated Brass(N)
- ⊙ IP Degree: IP65,IK09



Installation of GQ19 super flat switch

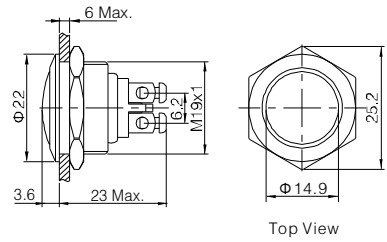


| GQ19PF-10/⊙ GQ19PH-10/⊙ | | Material | Button | Stainless steel | GQ19PF-10/J/⊙ GQ19PH-10/J/⊙ | | Material | Button | Stainless steel |
|----------------------------|------------------|------------------|-------------------------------------|-------------------------------------|--------------------------------|---------------------------|----------------|-----------|-------------------------------------|
| Terminal Type | Screw terminal | | Body | Stainless steel/Nickel-plated brass | Terminal Type | Pin terminal(2.8 × 0.5mm) | | Body | Stainless steel/Nickel-plated brass |
| | Switching | | x(double-break slow-motion contact) | Base | | PBT | | Switching | x(double-break slow-motion contact) |
| Operation Pressure | About 4N | Operation Travel | About 2.5mm | Operation Pressure | About 4N | Operation Travel | About 2.5mm | | |
| Panel Thickness | 1 ~ 6mm | Torque | 0.8Nm | Panel Thickness | 1 ~ 6mm | Torque | 0.8Nm | | |
| Mechanical Life | 1,000,000 cycles | Electrical Life | 200,000 cycles | Mechanical Life | 1,000,000 cycles | Electrical Life | 200,000 cycles | | |
| | | RoHS | Made to order | | | RoHS | Made to order | | |



GQ19SB-10/0

- ⊙ Φ 19mm Diameter
- ⊙ Switch Rating: 2A/36VDC
- ⊙ Contact Configuration: 1NO(1NC can be made to order)
- ⊙ **Structure feature: short afterbody**
- ⊙ Operation Type: Momentary
- ⊙ The Front Shape: Domed
- ⊙ The Crust Material: (⊙): Stainless steel(S)/ Nickel plated Brass(N)
- ⊙ IP Degree: IP65,IK09

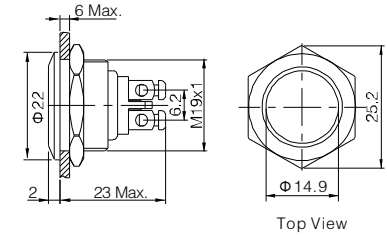


Top View



GQ19SF-10/0

- ⊙ Φ 19mm Diameter
- ⊙ Switch Rating: 2A/36VDC
- ⊙ Contact Configuration: 1NO(1NC can be made to order)
- ⊙ **Structure feature: short afterbody**
- ⊙ Operation Type: Momentary
- ⊙ The Front Shape: Flat round
- ⊙ The Crust Material: (⊙): Stainless steel(S)/ Nickel plated Brass(N)
- ⊙ IP Degree: IP65,IK09

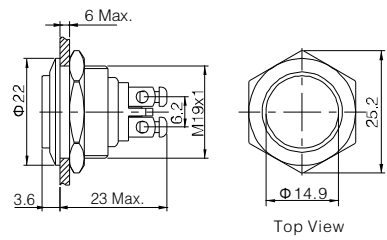


Top View



GQ19SH-10/0

- ⊙ Φ 19mm Diameter
- ⊙ Switch Rating: 2A/36VDC
- ⊙ Contact Configuration: 1NO(1NC can be made to order)
- ⊙ **Structure feature: short afterbody**
- ⊙ Operation Type: Momentary
- ⊙ The Front Shape: High round
- ⊙ The Crust Material: (⊙): Stainless steel(S)/ Nickel plated Brass(N)
- ⊙ IP Degree: IP65,IK09

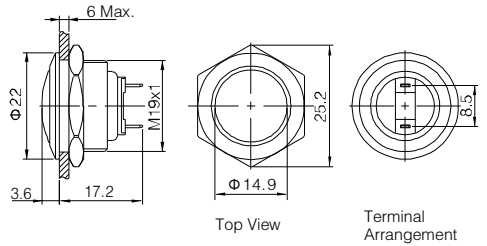


Top View



GQ19SB-10/J/0

- ⊙ Φ 19mm Diameter
- ⊙ Switch Rating: 2A/36VDC
- ⊙ Contact Configuration: 1NO(1NC can be made to order)
- ⊙ **Structure feature: short afterbody**
- ⊙ Operation Type: Momentary
- ⊙ The Front Shape: Domed
- ⊙ The Crust Material: (⊙): Stainless steel(S)/ Nickel plated Brass(N)
- ⊙ IP Degree: IP65,IK09



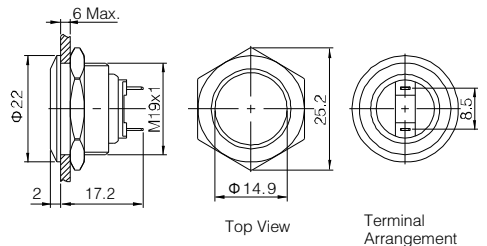
Top View

Terminal Arrangement



GQ19SF-10/J/0

- ⊙ Φ 19mm Diameter
- ⊙ Switch Rating: 2A/36VDC
- ⊙ Contact Configuration: 1NO(1NC can be made to order)
- ⊙ **Structure feature: short afterbody**
- ⊙ Operation Type: Momentary
- ⊙ The Front Shape: Flat round
- ⊙ The Crust Material: (⊙): Stainless steel(S)/ Nickel plated Brass(N)
- ⊙ IP Degree: IP65,IK09



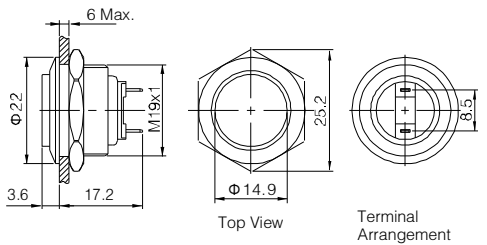
Top View

Terminal Arrangement



GQ19SH-10/J/0

- ⊙ Φ 19mm Diameter
- ⊙ Switch Rating: 2A/36VDC
- ⊙ Contact Configuration: 1NO(1NC can be made to order)
- ⊙ **Structure feature: short afterbody**
- ⊙ Operation Type: Momentary
- ⊙ The Front Shape: High round
- ⊙ The Crust Material: (⊙): Stainless steel(S)/ Nickel plated Brass(N)
- ⊙ IP Degree: IP65,IK09



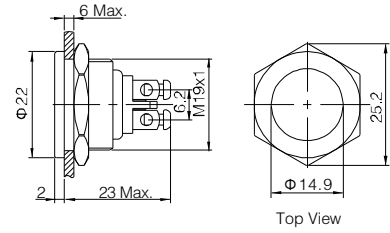
Top View

Terminal Arrangement

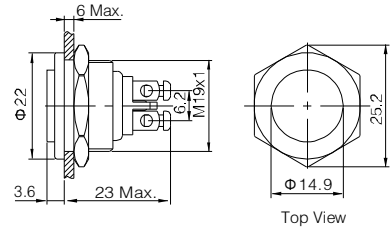
| GQ19SB-10/0 GQ19SF-10/0 GQ19SH-10/0 | | Material | Lamp Cover | Stainless steel | GQ19SB-10/J/0 GQ19SF-10/J/0 GQ19SH-10/J/0 | | Material | Lamp Cover | Stainless steel |
|---|-------------------------------------|---------------------------|---------------|-------------------------------------|---|---------------------------|---------------|------------|-------------------------------------|
| | | | Body | Stainless steel/Nickel-plated brass | | | | Body | Stainless steel/Nickel-plated brass |
| | | Base | PBT | | | Base | PBT | | |
| Terminal Type | Screw Terminal | Operation Pressure | About 4N | Terminal Type | Pin Terminal | Operation Pressure | About 4N | | |
| Switching | x(double-break slow-motion contact) | Operation Travel | About 2.5mm | Switching | x(double-break slow-motion contact) | Operation Travel | About 2.5mm | | |
| Panel Thickness | 1 ~ 6mm | | | Panel Thickness | 1 ~ 6mm | | | | |
| Torque | 0.8Nm | | | Torque | 0.8Nm | | | | |
| Mechanical Life | 1,000,000 cycles | | | Mechanical Life | 1,000,000 cycles | | | | |
| Electrical Life | 200,000 cycles | RoHS | Made to order | Electrical Life | 200,000 cycles | RoHS | Made to order | | |



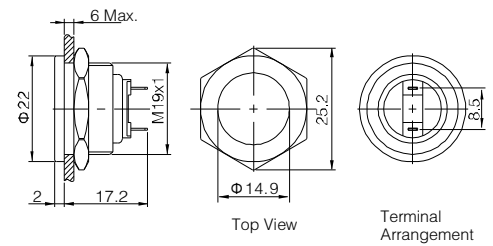
- ⊙ Φ 19mm Diameter
- ⊙ Switch Rating: 2A/36VDC
- ⊙ Contact Configuration: 1NO(1NC can be made to order)
- ⊙ **Structure feature: short afterbody**
- ⊙ Operation Type: Momentary
- ⊙ The Front Shape: Flat round
- ⊙ The Crust Material: (⊙): Stainless steel(S)/
Black anodized aluminium alloy(A)
- ⊙ IP Degree: IP65, IK09



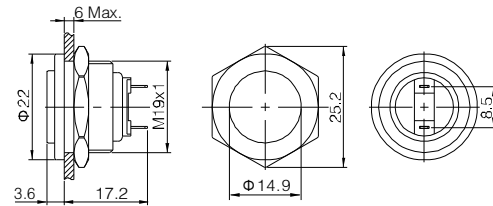
- ⊙ Φ 19mm Diameter
- ⊙ Switch Rating: 2A/36VDC
- ⊙ Contact Configuration: 1NO(1NC can be made to order)
- ⊙ **Structure feature: short afterbody**
- ⊙ Operation Type: Momentary
- ⊙ The Front Shape: High round
- ⊙ The Crust Material: (⊙): Stainless steel(S)/
Black anodized aluminium alloy(A)
- ⊙ IP Degree: IP65, IK09



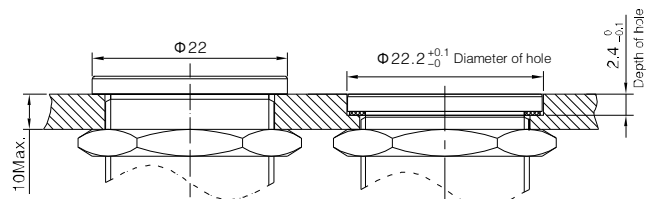
- ⊙ Φ 19mm Diameter
- ⊙ Switch Rating: 2A/36VDC
- ⊙ Contact Configuration: 1NO(1NC can be made to order)
- ⊙ **Structure feature: short afterbody**
- ⊙ Operation Type: Momentary
- ⊙ The Front Shape: Flat round
- ⊙ The Crust Material: (⊙): Stainless steel(S)/
Black anodized aluminium alloy(A)
- ⊙ IP Degree: IP65, IK09



- ⊙ Φ 19mm Diameter
- ⊙ Switch Rating: 2A/36VDC
- ⊙ Contact Configuration: 1NO(1NC can be made to order)
- ⊙ **Structure feature: short afterbody**
- ⊙ Operation Type: Momentary
- ⊙ The Front Shape: High round
- ⊙ The Crust Material: (⊙): Stainless steel(S)/
Black anodized aluminium alloy(A)
- ⊙ IP Degree: IP65, IK09



Installation of GQ19 super flat switch

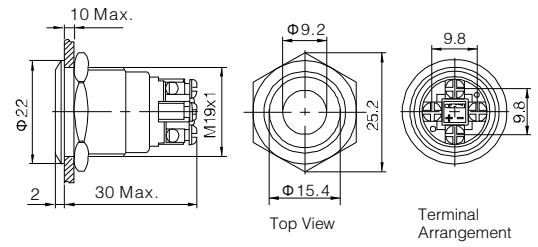


| GQ19SPF-10/0 GQ19SPH-10/0 | | Material | Lamp Cover | Stainless steel | GQ19SPF-10/J/0 GQ19SPH-10/J/0 | | Material | Lamp Cover | Stainless steel |
|------------------------------|-------------------------------------|--------------------|---------------|-----------------|-------------------------------------|--------------------|---------------|------------|-----------------|
| | | | Body | Stainless steel | | | | Body | Stainless steel |
| | | | Base | PBT | | | | Base | PBT |
| Terminal Type | Screw Terminal | Operation Pressure | About 4N | Terminal Type | Pin Terminal | Operation Pressure | About 4N | | |
| Switching | x(double-break slow-motion contact) | Operation Travel | About 2.5mm | Switching | x(double-break slow-motion contact) | Operation Travel | About 2.5mm | | |
| Panel Thickness | 1 ~ 6mm | | | Panel Thickness | 1 ~ 6mm | | | | |
| Torque | 0.8Nm | | | Torque | 0.8Nm | | | | |
| Mechanical Life | 1,000,000 cycles | | | Mechanical Life | 1,000,000 cycles | | | | |
| Electrical Life | 200,000 cycles | RoHS | Made to order | Electrical Life | 200,000 cycles | RoHS | Made to order | | |



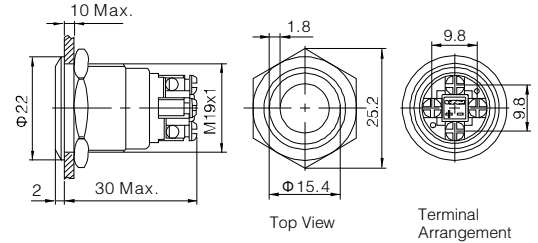
GQ19F-10D/Δ/▲/S

- ⊙ Indicator part number: GQ19F-D/Δ/▲/S
- ⊙ Φ 19mm Diameter
- ⊙ Switch Rating: 2A/36VDC
- ⊙ Contact Configuration: 1NO
- ⊙ Operation Type: Momentary
- ⊙ LED Color(Δ): **R G Y O B W**
- ⊙ LED Voltage(▲): 6V/12V/24V/36V/110V/220V
- ⊙ The Crust Material: Stainless steel
- ⊙ IP Degree: IP65,IK08



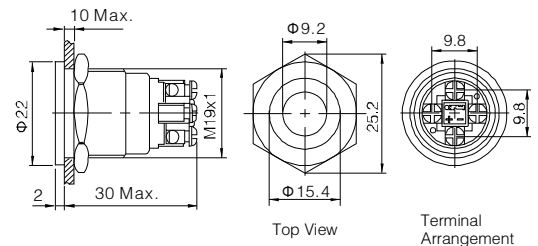
GQ19F-10E/Δ/▲/S

- ⊙ Indicator part number: GQ19F-E/Δ/▲/S
- ⊙ Φ 19mm Diameter
- ⊙ Switch Rating: 2A/36VDC
- ⊙ Contact Configuration: 1NO
- ⊙ Operation Type: Momentary
- ⊙ LED Color(Δ): **R G Y O B W**
- ⊙ LED Voltage(▲): 6V/12V/24V/36V/110V/220V
- ⊙ The Crust Material: Stainless steel
- ⊙ IP Degree: IP65,IK08



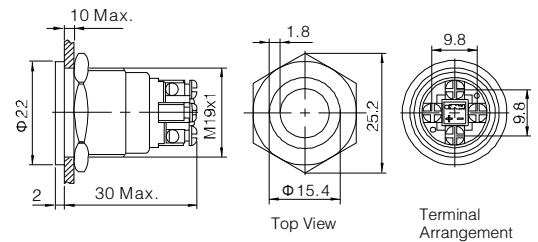
GQ19PF-10D/Δ/▲/S

- ⊙ Indicator part number: GQ19PF-D/Δ/▲/S
- ⊙ Φ 19mm Diameter
- ⊙ Switch Rating: 2A/36VDC
- ⊙ Contact Configuration: 1NO
- ⊙ Operation Type: Momentary
- ⊙ LED Color(Δ): **R G Y O B W**
- ⊙ LED Voltage(▲): 6V/12V/24V/36V/110V/220V
- ⊙ The Crust Material: Stainless steel
- ⊙ IP Degree: IP65,IK08



GQ19PF-10E/Δ/▲/S

- ⊙ Indicator part number: GQ19PF-E/Δ/▲/S
- ⊙ Φ 19mm Diameter
- ⊙ Switch Rating: 2A/36VDC
- ⊙ Contact Configuration: 1NO
- ⊙ Operation Type: Momentary
- ⊙ LED Color(Δ): **R G Y O B W**
- ⊙ LED Voltage(▲): 6V/12V/24V/36V/110V/220V
- ⊙ The Crust Material: Stainless steel
- ⊙ IP Degree: IP65,IK08



| GQ19F-10D/Δ/▲/S GQ19F-10E/Δ/▲/S | | GQ19PF-10D/Δ/▲/S GQ19PF-10E/Δ/▲/S | |
|------------------------------------|-------------------------------------|--------------------------------------|-------------------|
| Terminal Type | Screw Terminal | Material | Lamp Cover |
| Switching | x(double-break slow-motion contact) | | Body |
| Panel Thickness | 1 ~ 6mm | | Base |
| Torque | 0.8Nm | Operation Pressure | About 4N |
| Mechanical Life | 1,000,000 cycles | Operation Travel | About 2.5mm |
| Electrical Life | 200,000 cycles | RoHS | Made to order |

Installation of GQ19 super flat switch

